

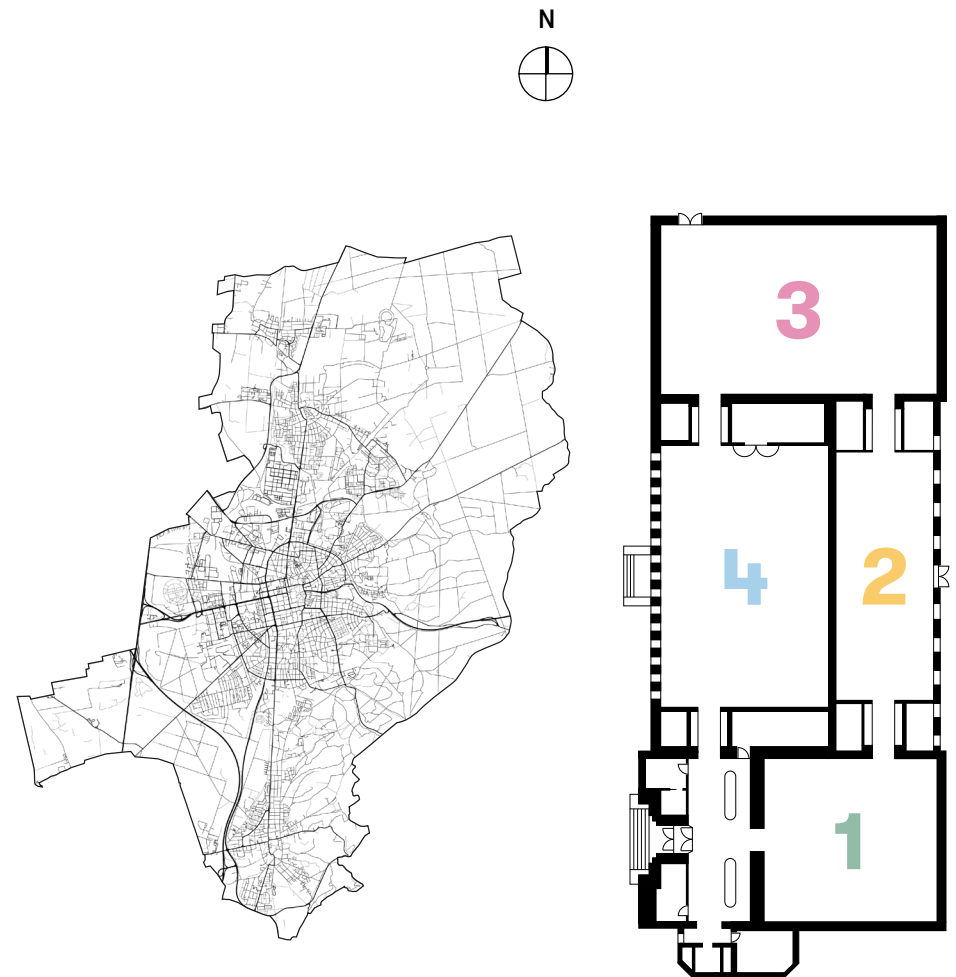
3

2

1

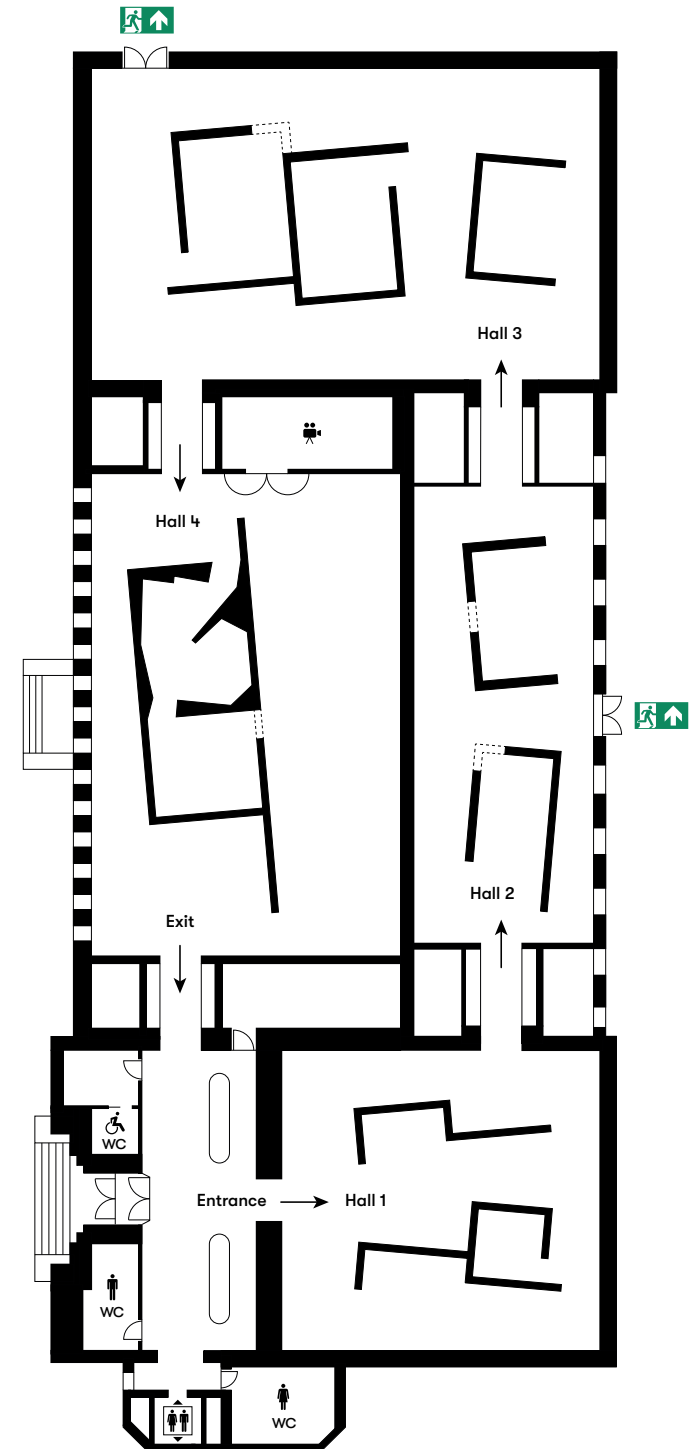
4-3-2-1 Darmstadt – with this countdown, the Institut Mathildenhöhe Darmstadt is celebrating the reopening of the completely renovated Exhibition Hall. The multifaceted special exhibition showcasing the artistic topography is comparable to a stroll through 200 years of Darmstadt's cultural heritage. Outstanding paintings, sculptures, prints, photographs, and video art from Darmstadt's Municipal Art Collection shed light on the city's history and feature extraordinary people who have lived and worked here or currently shape the cultural landscape. A focus has been placed on little-known female artists of the early 20th century and some of their works that have never been exhibited before.

The city map is superimposed on the floor plan of the four halls of the Exhibition Hall. This creates a dynamic walk through the exhibition: from Eberstadt in the south in Hall 1 to Wixhausen in the north in Hall 3, and from the Oberfeld in Hall 2 to Luisenplatz in Hall 4, the city can be explored through the artworks of the artists. Their works provide the coordinates for the stroll through the exhibition. Fragments of Darmstadt's street map can be found on the floor of the exhibition halls. The cross-temporal and cross-media presentation of artworks invites visitors to explore the city and its art with new eyes.

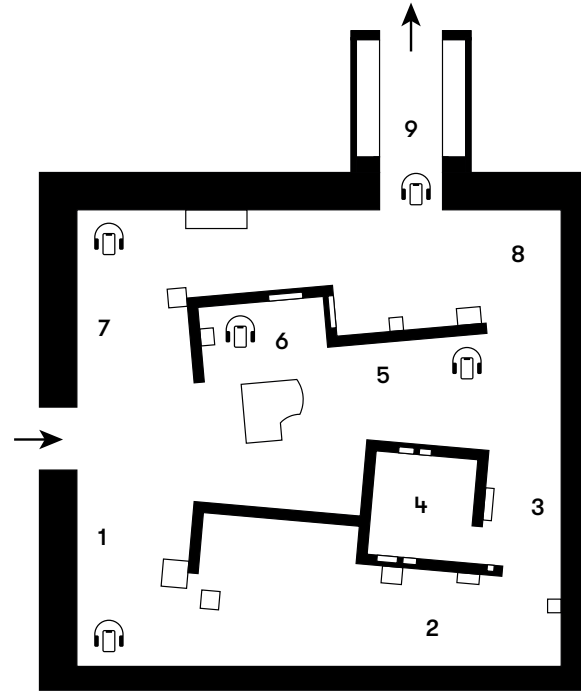


Darmstadt's street map and floor plan of the Exhibition Hall

Our multi-media guide opens up additional perspectives for exploring the city of Darmstadt and its artworks: Commentaries and impressions from artists and writers give you an insight into the personal stories and historical references of individual artworks.

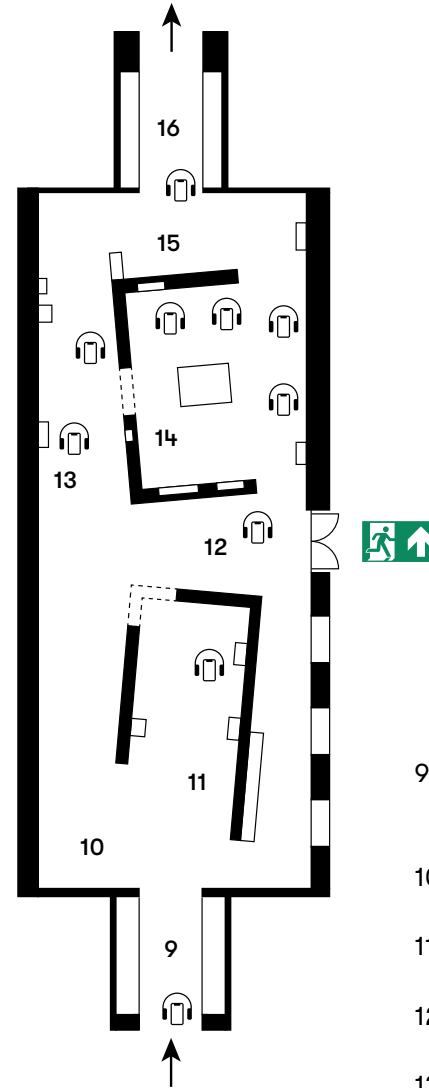


Hall 1



- 1 Hiking Along the Bergstraße – Nature in Southern Hesse as ‘Second Italy’
- 2 Eberstadt and Marienhöhe
- 3 The Böllenfalltor – Commitment in Front of and in the Stands
- 4 With Hat and Wine Glass Through Darmstadt – The Datterich
- 5 Strolling Through Bessungen
- 6 The House of the Art Lover Alexander Koch
- 7 Die Dachstube – The Cradle of Darmstadt Expressionism
- 8 The Artist Couple Ludwig and Else Meidner
- 9 Participate in Theater History – The Walter Röhler Toy Theater Collection

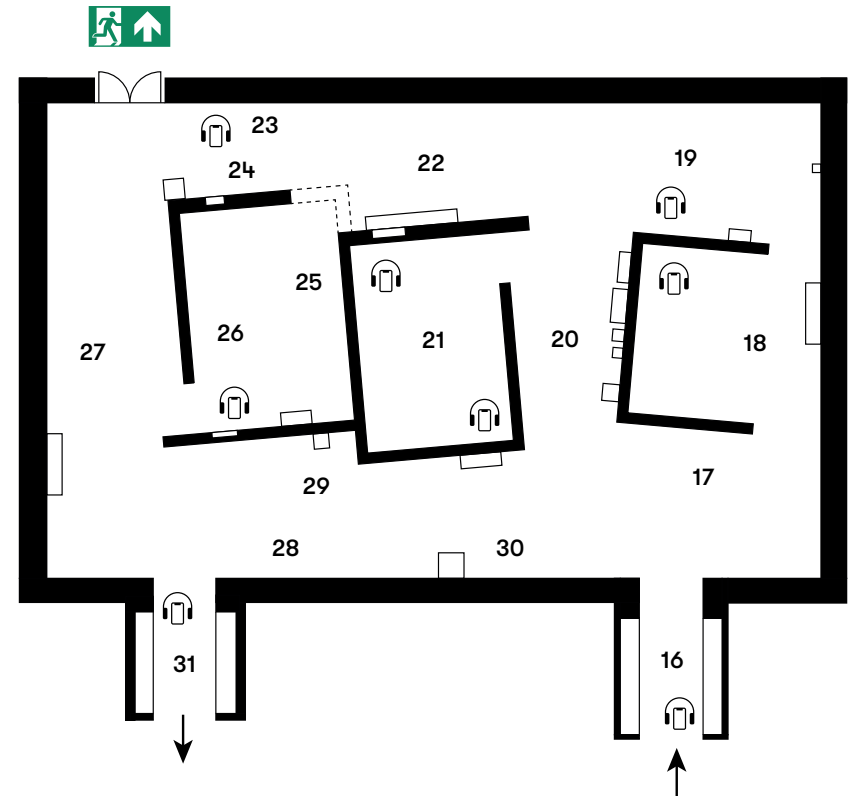
Hall 2



- 9 Participate in Theater History – The Walter Röhler Toy Theater Collection
- 10 The Great Woog and the Studio of Elsa Schwarze-von Arnim
- 11 Rosenhöhe – From English Landscape Park to Rose Garden
- 12 On the Outskirts – The Oberfeld as a Space of Nature and Culture
- 13 Art and Life on the Mathildenhöhe Darmstadt After 1914
- 14 Neighbors – The New Artists’ Colony Park Rosenhöhe
- 15 The Double Studio in Wolfskehlstraße
- 16 A Creative Center in the Northern Part of Darmstadt – Helmut Lortz, the Saustall and the New Darmstadt Secession

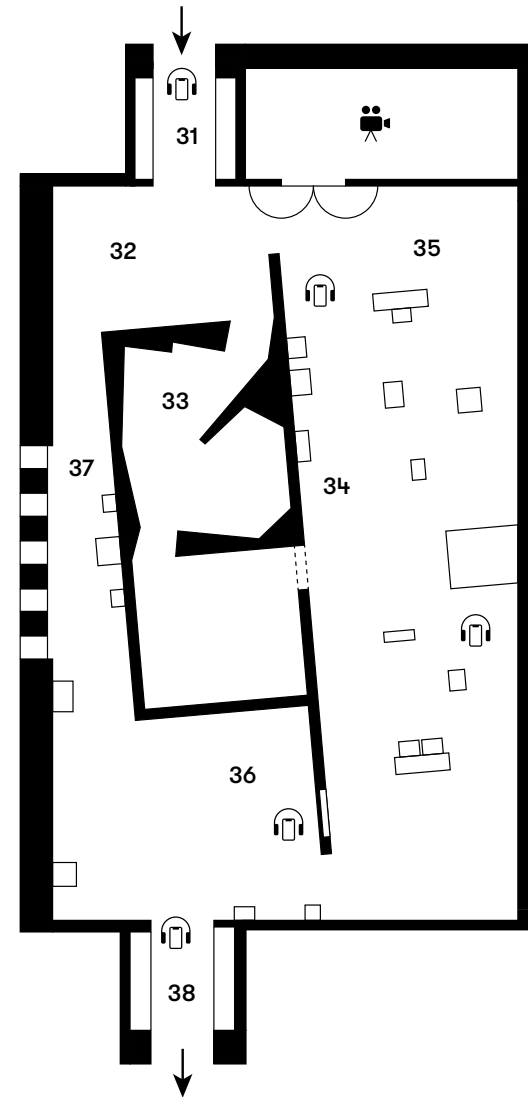
Hall 3

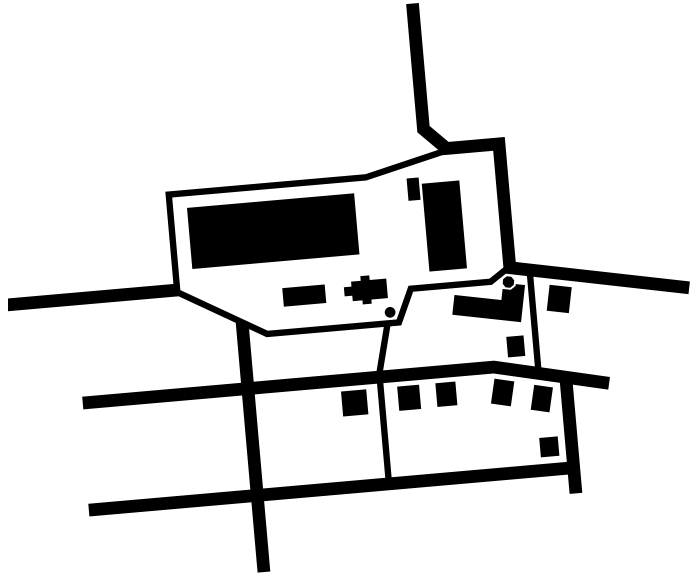
- 16 A Creative Center in the Northern Part of Darmstadt – Helmut Lortz, the Saustall and the New Darmstadt Secession
- 17 Ernst Vogel's Studio in the Composers' Quarter
- 18 Atelierhaus Vahle – A Place of Interrelations
- 19 Versatile Through the Centuries. Kranichstein and its Hunting Château
- 20 In the Direct Neighborhood – The Gotthelf Schlotter Studio and the Künstlerhaus Ziegelhütte
- 21 Artists in Residence – The Charlotte-Prinz-Haus in Arheilgen
- 22 Fluxus in Darmstadt – The Studio Ordo in Arheilgen
- 23 Wixhausen – History and Future
- 24 Chemistry Meets Art – The Merck Dynasty of Darmstadt Pharmacists
- 25 Creativity in a Serene Environment – Johannesviertel and Martinsviertel
- 26 Darmstadt's Mollerstadt – Feminist Approaches to Art Around 1850
- 27 HEAG – Technological Advancement at the Turn of the Century
- 28 Painting to Remember – Darmstadt's Synagogues
- 29 Shifting Scenes – From Court Theater to State Theater
- 30 The Hessian State Museum Darmstadt
- 31 Search and Find – Works by the Scholl Family of Sculptors for Darmstadt



Hall 4

- 31 Search and Find – Works by the Scholl Family of Sculptors for Darmstadt
- 32 Traces of the Old Darmstadt
- 33 Brandnacht – Void, Reconstruction, Memory
- 34 The City Crown
- 35 Award-winning! The Wilhelm Loth Prize of the City of Darmstadt
- 36 The Villa “In Roses” – A Nucleus of Darmstadt Art and Cultural Politics
- 37 The New Palace as Modern Urban Residence
- 38 4–3–2–1 The Exhibition Hall at the Mathildenhöhe Darmstadt





Imprint

4-3-2-1 Darmstadt

Sep 21, 2024 – Apr 27, 2025
Exhibition Hall
Mathildenhöhe Darmstadt

Director: Dr. Philipp Gutbrod

Institut Mathildenhöhe Darmstadt
Olbrichweg 15
D-64287 Darmstadt
T +49 (0) 6151 13 28 08
F +49 (0) 6151 13 37 39
mathildenhoehe@darmstadt.de
www.mathildenhoehe.de

f    #mathildenhoehe
#4321darmstadt

© 2024 Institut Mathildenhöhe Darmstadt